

# Bishamon

# EZ Mover™

## Hand Pallet Trucks

Bishamon's BS Series Hand Pallet Trucks are easy to use and exceptionally durable. These premium pallet trucks have many features not found on competitive models and provide unsurpassed rollability.

All Bishamon products are designed and manufactured for lifting and moving applications under the toughest working conditions, and provide years of trouble-free operation. They reflect over 50 years of proven Bishamon performance.

These pallet trucks are designed and manufactured to easily move palletized loads. By utilizing quality components and manufacturing techniques, Bishamon's BS Series pallet trucks can be expected to outlast other products which promise comparable quality. Bishamon's pallet jacks are completely rebuildable and offer many extra years of valued service.

BS Series Pallet Trucks are available in three capacities, two fork widths, four fork lengths and two fork heights. A heavy-duty model increases capacity to 6,500 lbs. and the Lo-Profile model decreases fork height to 2 in.

BS Series Pallet Trucks are found in warehouses, factories, stockrooms, super markets, workshops, cold-rooms and freezers. BS Pallet Trucks may also be used on loading docks and inside trucks.

### Standard Features

- Three position lever controls hydraulic system with the handle in any position
- Handle swivels through 210 degrees



- Foot and hand controls for the lowering function
- Rugged construction, with heavy gauge steel and sturdy continuous welds throughout
- Steering head and hydraulic assembly use low-friction thrust bearings
- Double ball bearings in wheels and load rollers
- Wheels and load rollers have polyurethane tread for optimum rollability and durability
- Heavy duty model has 6,500 lb. capacity and dual load rollers in each fork
- Solid steel push rods
- Hydraulic systems proven on a range of Bishamon lift products
- Surfaces degreased, oxide primed and finished with two coats of enamel

### Advantages

Exceptional features generate the following advantages:

- Easy operation and full control by operator at all times
- Exceptional maneuverability in tight quarters
- Greater flexibility of operation
- Products can take the hard use of a rough industrial environment
- Easier steering and smooth operation
- Years of trouble-free use
- Ease of maintenance
- Fully rebuildable

### Benefits

BS Series features and advantages translate into:

- More efficient operations
- Increased versatility
- Ease of use
- Product longevity
- Eliminates downtime
- Easy maintenance
- Less worker fatigue

### Accessories

- 48 in. backrest
- 20 1/2 in. or 27 in. Skid adaptor

**Working Harder To Make Your Life Easier**

Ph (800) 358-8833 • Fax (909) 390-0060 • [www.bishamon.com](http://www.bishamon.com)



Formed fork for added strength and durability.

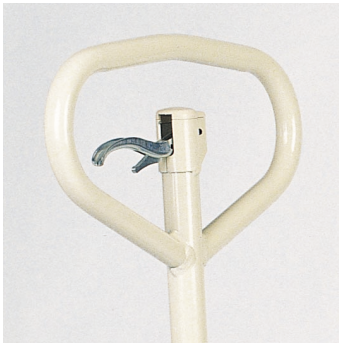


Steel reinforced plate strengthens frame connection and keeps forks parallel

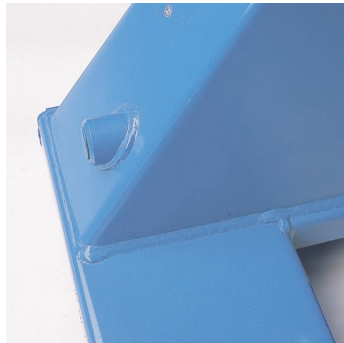


Formed steel entry slide diverts debris and guides pallet truck into pallet.

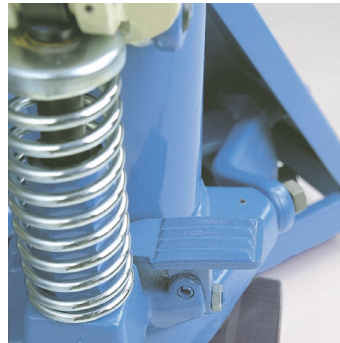
Model	Capacity (pounds)	Width	Fork Size (Inches)		Fork Height (inches)		Approximate Shipping weight (pounds)
			Length	Lowered	Raised		
BS-55A	5,500	27.0	48	2.88	7.88	217	
BS-55B	5,500	27.0	42	2.88	7.88	214	
BS-55C	5,500	27.0	36	2.88	7.88	204	
BS-55D	5,500	27.0	32	2.88	7.88	210	
BS-55E	5,500	20.5	48	2.88	7.88	214	
BS-55F	5,500	20.5	42	2.88	7.88	202	
BS-55G	5,500	20.5	36	2.88	7.88	192	
BS-55H	5,500	20.5	32	2.88	7.88	185	
BS-25A	2,500	27.0	48	1.88	5.50	213	
BS-65A	6,500	27.0	48	3.25	7.88	281	



Three-position Control Lever provides fingertip control of all hydraulic system functions with the handle in any position



Continuous seam welds on frame for strength and durability



Additional foot control duplicates lowering function control



Self-contained rebuildable hydraulic system



5651 East Francis Street  
Ontario, California 91761-3601

**1-800-358-8833**

Fax (909) 390-0060 • [www.bishamon.com](http://www.bishamon.com)

DISTRIBUTED BY:



Warranty - Bishamon Industries Corp. ("Bishamon") warrants its products to be free from defects in material and workmanship for a period of one (1) year from the date of initial shipment. This warranty shall not apply to any misuse, mishandling, accident, shipping, alteration, or unauthorized repair of any Bishamon product or part. For complete details of warranty, please contact Bishamon at 800-358-8833.