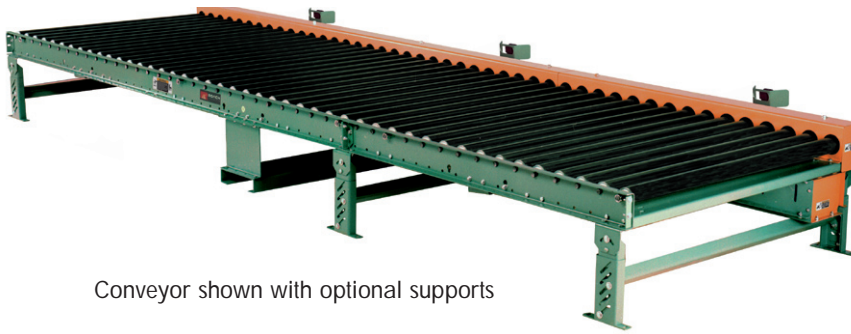


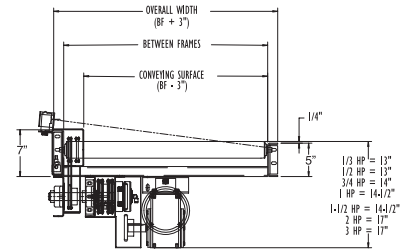
MODEL SZA251CDA HEAVY DUTY CHAIN DRIVEN ZERO PRESSURE ACCUMULATOR

AIR CLUTCH OPERATED ZONES

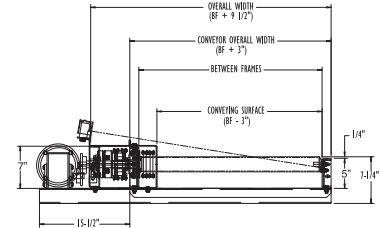


Conveyor shown with optional supports

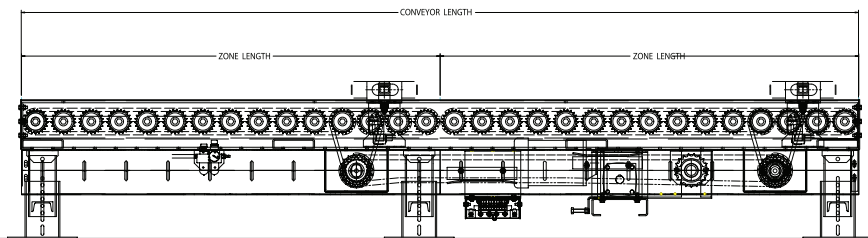
SZA251CDA SMART ZONE® is a heavy duty roll-to-roll chain driven zero pressure accumulator, designed to safely accumulate heavy products such as castings, drums, containers and heavy pallet loads in 5' zones. The Roach design incorporates photo electric sensors--instead of sensor rollers--which eliminates many of the problems associated with conveying wooden pallets. Products do not touch during accumulation and are singulated individually off of conveyor. SMART ZONE® is easy to install and simple to maintain.



SZA192CDA AIR CLUTCH UNDERNEATH



SZA192CDA AIR CLUTCH SIDEMOUNT



SMART ZONE:

Retroflective photo eyes includes 110V AC or 24V DC power supply.

SPECIFICATIONS

TREAD ROLLERS: 2-1/2" dia. x 11 ga. steel, model 251S.

CHAIN DRIVE: Roller-to-roller No. 40 roller chain. Zone-to-zone No. 60 roller chain.

CENTER DRIVE: Drive either side mounted or underside mounted (specify). Drive shafts are supported by precision, heavy duty, lubricated, ball bearing units.

ROLLER CENTERS: 4" or 6" ONLY.

BED: 7" x 1-1/2" x 7 ga. and 5" x 1-1/2" x 7 ga. formed steel channel frame. Bed sections bolted together with butt couplings and floor supports.

ACCUMULATION ZONE: 5'-0" zone lengths, zone singulation operation, photo electric sensor controlled zones with air clutch. (60 psi max)

SPEED: 35 FPM, constant.

CHAIN GUARD: Chains are completely enclosed along entire length of conveyor.

BEARINGS: Removable type, heavy duty ball bearings, zinc-plated, grease packed, labyrinth seal.

FRL: Unit is provided with filter, regulator and lubricator with 3/8" ports for 60 PSI operational pressure.

MOTOR DRIVE: 3/4 HP, 230/460/3, 60 cycle, ODP right angle gear motor.

CAPACITY: 1000 lbs./ft. up to a maximum of 3000 lb. pallet.

ELECTRICAL CONTROLS: Optional.



SPECIFICATION TABLE

■ 6 week shipment

CONVEYOR LENGTH		10'	20'	30'	40'	50'	60'	70'	80'	90'	100'
BF	Conv. Surface	UNIT WEIGHTS (lbs.) with 4" Roller Centers									
15"	12"	869	1557	2246	2934	3623	4311	5000	5688	6377	7066
21"	18"	958	1728	2497	3266	4036	4805	5574	6344	7113	7882
27"	24"	1063	1926	2789	3653	4516	5379	6242	7105	7975	8845
33"	30"	1151	2108	3057	4005	4954	5903	6851	7806	8756	9706
39"	36"	1246	2271	3297	4322	5348	6373	7399	8424	9454	10484
45"	42"	1342	2453	3565	4676	5787	6899	8011	9122	10242	11362
51"	48"	1427	2615	3802	4990	6178	7365	8553	9741	10941	12141
54"	51"	1475	2661	3936	5167	6398	7628	8859	10090	11315	12540
57"	54"	1523	2707	4070	5344	6618	7891	9165	10439	11689	12939
63"	60"	1620	2980	4339	5699	7059	8418	9778	11138	12508	13878
Unit weights (lbs.) with 6" roller centers											
15"	12"	811	1441	2073	2701	3331	3961	4591	5221	5851	6481
21"	18"	887	1587	2290	2993	3696	4399	5003	5707	6411	7117
27"	24"	963	1726	2489	3253	4016	4779	5542	6305	7078	7851
33"	30"	1039	1868	2697	3525	4354	5183	6011	6840	7674	8508
39"	36"	1116	2011	2907	3802	4698	5593	6489	7384	8288	9192
45"	42"	1192	2153	3115	4076	5037	5999	6961	7922	8896	9870
51"	48"	1267	2295	3322	4350	5308	6405	7433	8461	9495	10529
54"	51"	1305	2321	3407	4487	5513	6608	7669	8730	9809	10888
57"	54"	1343	2347	3530	4624	5718	6811	7905	8999	10123	11247
63"	60"	1420	2550	3739	4899	6051	7218	8378	9538	10732	11926

OPTIONAL EQUIPMENT

ZONE LENGTHS: 3' through 10' in 4" or 6" increments as per roller centers and zone chain pitch. Frame lengths will vary with zone lengths.

BED: 7" x 9.8 lbs./ft. and 5" x 6.7 lbs./ft. structural frames.

TREAD ROLLERS: 2-9/16" x 7 ga. steel, model 297S tread rollers.

FLOOR SUPPORTS: Supports, knee braces, casters and polytier supports available. See Conveyor Accessories.

SPEED: Constant speed 20-120 FPM; DC variable speed; AC inverter variable speed. Other constant or variable speeds available. Minimum unit speed is 20 FPM for model CDA. **NOTE: CAPACITY CHANGES WITH SPEED.**

MOTORS: Available through 3 HP in TEFC, explosion proof, dirty duty, brake motor, 115/230/1, 575/3, etc.

ELECTRICAL CONTROLS: Magnetic starter; one direction manual starter; limit switch; electric solenoid; hydraulic damper.

DEFUSED SMARTZONE: Photoeyes mounted below tread rollers.

