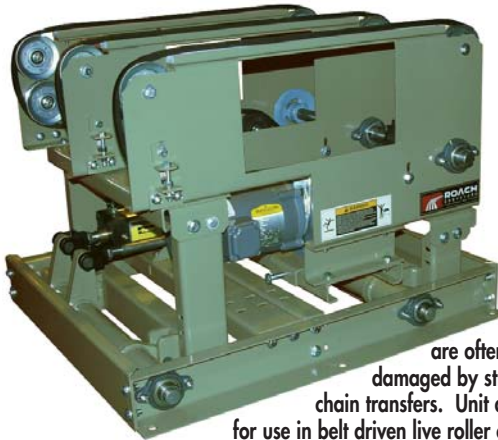
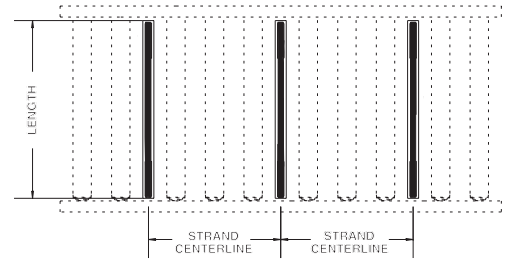


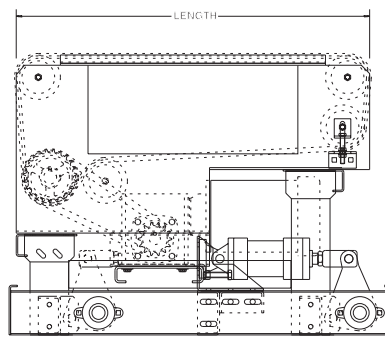
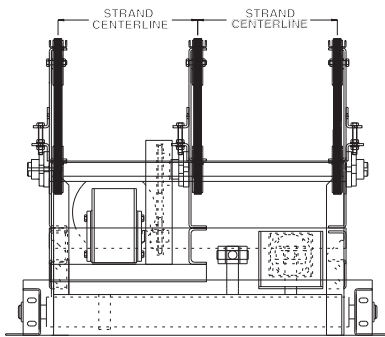
MODEL VBT3 90° 3-STRAND V-BELT TRANSFER



V-belt transfers are ideal for medium duty applications and are often used where product could be damaged by strands of chain on heavier duty chain transfers. Unit at left shown with frame cutout for use in belt driven live roller conveyor with 6" wide belting.



LENGTH	WT. (lbs.)	LENGTH	WT. (lbs.)
3'	395	6'	530
4'	440	7'	575
5'	485	8'	620



SPECIFICATIONS

TRANSFER ARM: 10 ga. formed channel.

TRANSFER BELT: "B" section V-belt.

STANDARD LENGTHS: 3', 4', 5', 6', 7' and 8' unit lengths.

V-BELT CENTERS: 18"

CENTER DRIVE: Allows reversible unit operation.

LIFT: Positive type.

BEARINGS: Heavy duty, lubricated, ball bearing unit with cast iron housings.

BELT SPEED: 35 FPM constant.

MOTOR DRIVE: 1/2 HP, 230/460/3, 60 cycle, ODP right angle gear motor.

FLOOR SUPPORTS: Integral part of unit, with adjustment of 18" to 20" top of V-belt (down position).

CAPACITY: Unit load not to exceed 500 lbs.

ELECTRICAL CONTROLS: Optional.

AIR CONTROL: 60-80 PSI required on air cylinders

OPTIONAL EQUIPMENT

STRANDS: 2, 4 or more.

STRAND CENTER: 12", 24" or as required by application.

BELT SPEED: 35-120 FPM, constant speed (specify). Other constant or variable speed available. **NOTE: CAPACITY CHANGES WITH SPEED.**

MOTORS: Available through 2 HP in TEFC, explosion proof, dirty duty, 115/230/1, 575/3, etc.

ELECTRICAL CONTROLS: Optional.



■ 4 week shipment